

SIFCO SELECTIVE PLATING APPLICATION EXCHANGE PROGRAM

REFERENCE NUMBER: 96008

DATE: 23 February, 1996

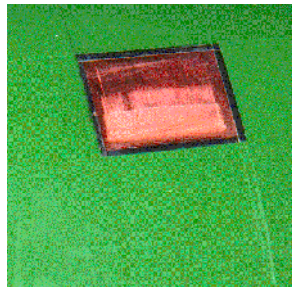
Printing

Rod Metzger Repairs Rolls for Printing Press



The roll for this Goss Metro Offset Press had a 0.025" deep defect that was 3/4" wide and 1 1/2" long. The defect was filled with 2050 Copper and capped with 2043 Cobalt. The photos below show the repair sequence.

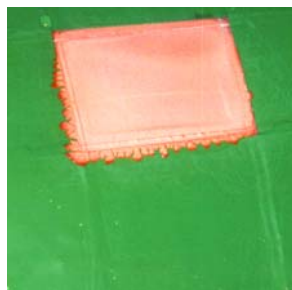
The defect is masked using aluminum and vinyl tape.



The masking is removed and the copper is dressed flush with the existing surface.



The masked area is plated with copper to fill the defect.

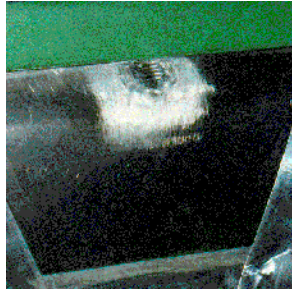


The repaired area is capped with cobalt and polished.



This blanket roll, which belongs to the Wall Street Journal, was damaged by a 3/8" bolt that fell into the press while it was in operation. The bolt was imbedded 1/4" deep into the leading edge surface of the blanket roll.

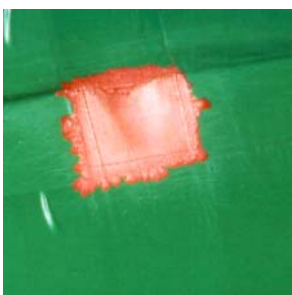
The following pictures show the repair sequence.



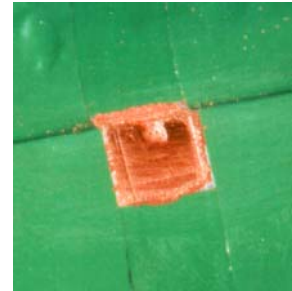
Impression left by a 3/8" bolt.



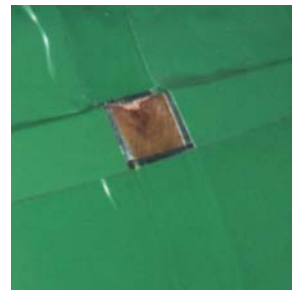
The defect, dressed after a partial fill.



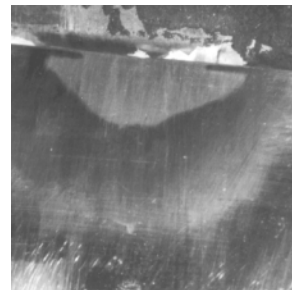
A heavy buildup is applied.



Another heavy buildup is applied.



Ready for the last layer of copper.



The copper dressed flush with the base.



After a 2043 Cobalt cap.