

Oil and Gas Industry

When Reliability Is The Only Option Engineered Deposits For:

- Conductivity
- Wear resistance
- Corrosion resistance
- Pre-braze
- Anti-galling
- Surface hardness
- Carburizing stop-off
- Refurbishment



On site At your facility At any of our facilities, worldwide

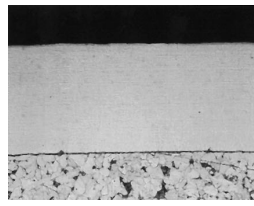
The SIFCO Process[®] provides for the selective application of engineered deposits and allows accurately controlled deposit thicknesses that can minimize or eliminate post machining operations, on both large and small components.

The SIFCO Process does not require extensive masking and it can eliminate the need for component disassembly. Because the SIFCO Process is portable, it can be used virtually anywhere!

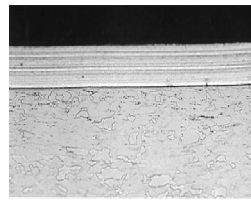
The SIFCO Process is flexible. It is ideal for lean, single-piece-flow production operations as well as for one-off repair jobs.



*AeroNikl[®] 250
Soft Sulfamate Nickel*



*AeroNikl[®] 575
Hard Sulfamate Nickel*



Cyanide Silver

*As specified in SAE 2451 and Mil-Std 865,
Many internal industry specifications, including FMC, Halliburton, Schlumberger, VAM Services, ReedHycalog, Technip.*