

Power Generation

Reliability is Not an Option Engineered Deposits For:

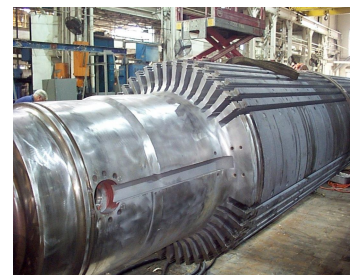
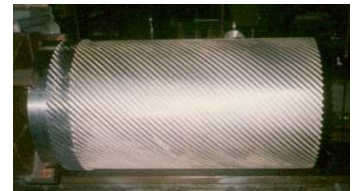
- Conductivity
- Wear resistance
- Corrosion resistance
- Pre-braze
- Anti-galling
- Surface hardness

On site
At your facility
At any of our facilities, worldwide

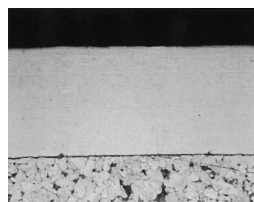
The SIFCO Process[®] provides for the selective application of engineered deposits and allows accurately controlled deposit thicknesses that can minimize or eliminate post machining operations.

The SIFCO Process does not require extensive masking and it can eliminate the need for component disassembly. Because the SIFCO Process is portable, it can be used virtually anywhere!

The SIFCO Process is flexible. It is ideal for lean, single-piece flow production operations as well as for one-off repair jobs.



AeroNikl 250
Soft Sulfamate Nickel



AeroNikl 575
Hard Sulfamate Nickel



Non-Cyanide Silver

Industrial and Commercial Approvals Include: AMS 2451, Mil-Std 865, Mil-Std 2197, General Electric, Siemens, Square D, Westinghouse