

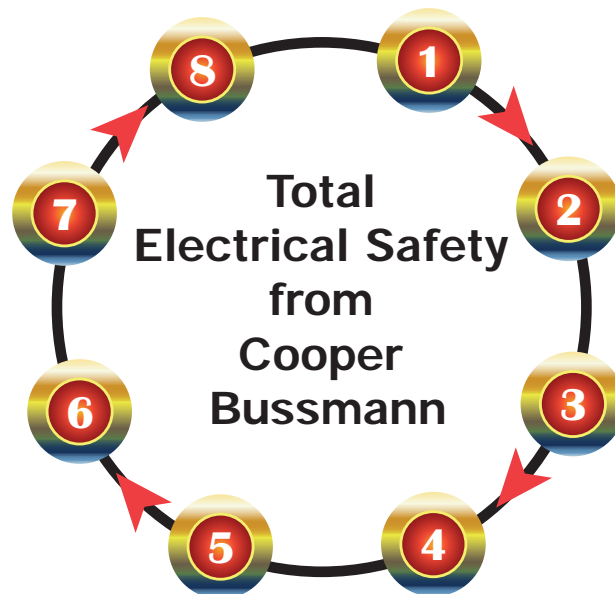
Engineering

Arc-Flash Safety and Productivity

The Cooper Bussmann® Services team has the experience in power system design, analysis and electrical safety to best assess and make recommendations that offer maximum protection and productivity. We go beyond just understanding electrical standards and regulations, actively participating in improving circuit protection and electrical safety.

Our comprehensive service offerings include:

- 1 - Electrical System One-Line Diagram Development
- 2 - Short-Circuit Current Analysis
- 3 - Overcurrent Protective Device Time-Current Curve Characteristic
- 4 - Overcurrent Protective Device Coordination Analysis
- 5 - Arc-Flash Hazard Analysis
- 6 - Arc-Flash Hazard Label Production
- 7 - Electrical Safety Training
- 8 - Annual Maintenance



To Order:

To find out more contact your local Cooper Bussmann representative, or visit us online at

www.cooperbussmann.com/services.

Engineering Catalog Numbers		
Description		Catalog Number
One Line Description Development		CBSV-ES-EN1
Data Collection		CBSV-ES-EN2
Short-Circuit Study		CBSV-ES-EN3
Selective Coordination Study		CBSV-ES-EN4
Arc-Flash Study		CBSV-ES-EN5
Labeling		CBSV-ES-EN6
Arc-Flash Training		CBSV-ES-EN7
Maintenace Plan for Arc-Flash Study		CBSV-ES-EN8

Engineering – OSCAR™ 2.0 Compliance Software

Calculate Assembly SCCR with Ease & Confidence

Enhanced Cooper Bussmann® OSCAR™ Software Speeds Code & Standards Compliance

The new Cooper Bussmann® OSCAR™ Version 2.0 SCCR (Short-Circuit Current Rating) compliance software easily guides you through entering your electrical panel's components and calculates an assembly SCCR. This award winning, online, essential design tool allows you to comply quickly and accurately with 2008 NEC® and UL 508A Supplement SB for assembly SCCR marking requirements:

- Industrial Control Panels [409.110]
- Industrial Machinery Electrical Panels [670.3(A)]
- HVAC Equipment [440.4(B)]

New Project Management Features:

- Simplify your panel design and project organization.
- Save and edit existing panel designs.
- Save multiple panels under a single project.
- Copy existing panels to new projects.

New Intuitive Navigation:

- Display your one-line diagram.
- Select from pre-loaded circuit templates.
- Identify the weakest link component automatically.
- Print reports and one-line diagrams for required SCCR documentation.
- Utilize mouse-over tips to enhance your design.

Design with Confidence:

- Logic updated to current UL requirements.
- Extensive 55,000+ component database.
- Search by partial part number or device rating.
- Custom device option allows for entering specialized component rating information.

To Subscribe:

Contact your local Cooper Bussmann distributor, or visit us online at www.cooperbussmann.com/oscar.



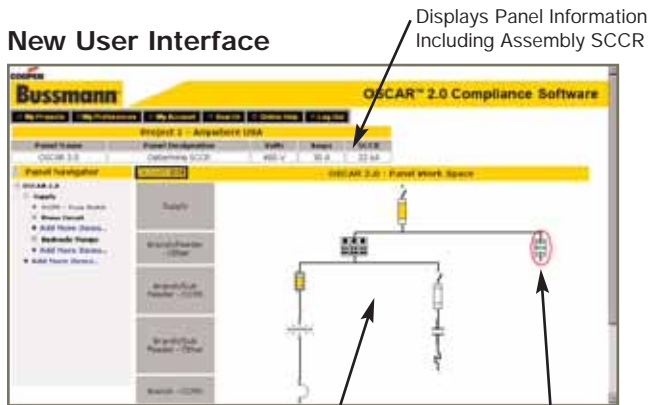
Order Information	
Description	Catalog Number
OSCAR™ 2.0 Compliance Software Annual Subscription	CBSV-SC-EN8

Engineering – OSCAR™ 2.0 Compliance Software

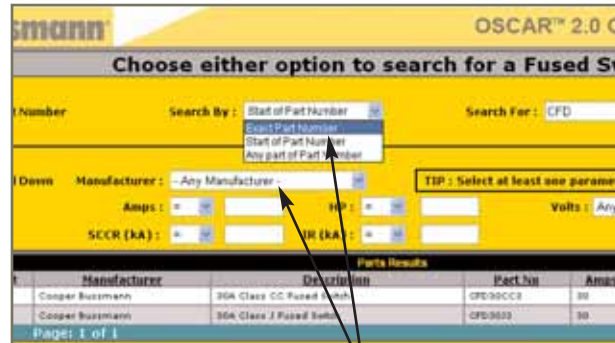
Cooper Bussmann® OSCAR™ 2.0 Software

The Cooper Bussmann OSCAR 2.0 Compliance Software is maintained online to provide you with the most current UL design standards, and to continuously update our product search database with new components and their individual ratings. This software is available 24/7—365 with a one-year subscription.

New User Interface

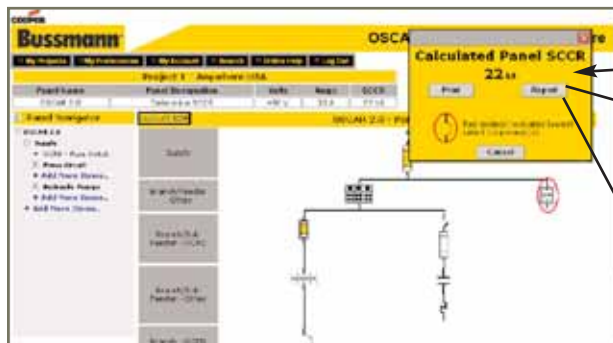


Easily Search the OSCAR Database to Aid in Design & Part Selection



Drop-Down Menus Enhance Search Capabilities

Improved Results & Documentation



Detailed Online Report or Print Option

OSCAR 2.0 - Determine SCCR				
Name	Description	Voltage	Amperes	Final SCCR
OSCAR 2.0	Determine SCCR	480 V	30 A	22 kA
Report				
Location	Part Number	Device Description	Volts	A
Supply - Main Supply		Fuse		
	LP-CC-30	CLASS - CC	600	
Supply - Main Supply		Fuse Switch		
	CFD-3-30CC	30A Class CC Compact Circuit Protector (CCP), 3 Pole	600	
Feeder - Feeder Off Main Supply		Terminal Block - Power Distribution		
	FD321-3	FD321-3 - Line: 240 to 8 AWG, Load: 4 to 14 AWG	600	

Additional Features:

- Simplify your panel design and project organization with the **My Projects** feature.
- Copy existing designs to new projects.
- Display your one-line diagram as each component is added through the new build-a-circuit graphical interface.

- Save and edit existing panel designs.
- Save multiple panels under a single project.
- Select from pre-loaded templates of common circuit types for faster design development.
- Detect combination ratings automatically.
- Utilize mouse-over tips to enhance your design.

Computer System Requirements:

All calculating activity takes place on the Cooper Bussmann server. Your computer only needs to have sufficient band width access to the Internet and the minimum requirements listed below. Performance is optimized by utilizing Internet Explorer and a PC. Apple/Macintosh computers and other web browsers may compromise OSCAR 2.0 performance.

- Computer: Pentium 1 PC or equivalent
- Web Browser: Internet Explorer 5.5 with Java script and cookies enabled
- Internet Connection: ADSL minimum

Training



Knowledge That Minimizes Risk to Maximize Productivity and Protection

Technology evolves, the Code and standards change, and new personnel are joining your operation. How do you manage this changing environment while still focusing on what you do best – running your operation? Expert training from Cooper Bussmann is the solution. We provide the training when and where you need it. Cooper Bussmann can deliver our world-class safety and technical training on-site at your facility or ours.

Training:

To arrange a Cooper Bussmann® training seminar, contact your local Cooper Bussmann representative, or e-mail us at services@cooperbussmann.com.



Publications and e-Training Modules

Cooper Bussmann® Services has developed advanced, value-added technical resources to meet the more demanding needs around Code compliance, and electrical design and safety.

How To Order:

For detailed descriptions on this portfolio visit www.cooperbussmann.com/services. Hardcopy materials are available through your local Cooper Bussmann distributor.

Training Catalog Numbers		
Description		Catalog Number
Designing Commercial & Industrial Power Systems	Per Person	CBSV-ES-ED1
Understanding Short-Circuit Current Rating Basics	1 Hour	CBTR-SC-1HP
Designing Panels with Higher SCCRs	2 Hour	CBTR-SC-2HP
Understanding Electrical Safety Basics	1 Hour	CBTR-ES-1HP
Electrical Hazards and Designing for Safety	2 Hour	CBTR-ES-2HP
NFPA 70E Workplace Guidelines	8 Hours (0.8 CEU)	CBTR-ES-1DA
Safety Basics User Kit	Hard Copy	CBSV-ES-ED3
Safety Basics Trainer Kit	Hard Copy	CBSV-ES-ED4
Safety Basics Video (VHS)	Hard Copy	CBSV-ES-ED5
Safety Basics CD	Hard Copy	CBSV-ES-ED6
Safety Basics Handbook	Hard Copy	CBPUB-ES-ED1H
Selecting Protective Devices (SPD)	Hard Copy	CBPUB-ES-ED2H
Electrical Plan Review (EPR) and Answer Sheet	Hard Copy	CBPUB-ES-ED3H
Interrupting Rating Overcurrent Protection DVD	Hard Copy	CBPUB-ES-ED30H
Selective Coordination: Preventing Blackouts DVD	Hard Copy	CBPUB-ES-ED31H
Current Limitation Overcurrent Protection DVD	Hard Copy	CBPUB-ES-ED32H
Motor Starter Protection: Overcurrent DVD	Hard Copy	CBPUB-ES-ED33H
Motor Protection DVD	Hard Copy	CBPUB-ES-ED34H
Specification Grade Protection DVD	Hard Copy	CBPUB-ES-ED35H
Overcurrent Protection 6 DVD Set	Hard Copy	CBPUB-ES-ED36H

Testing



Performance and Compliance Certification for Components and Assemblies

The Cooper Bussmann® Paul P. Gubany Center for High Power Technology at Cooper Bussmann is the electrical industry's most comprehensive facility for testing and certifying electrical components and assemblies.

OEM customers make the Gubany Center their first choice in testing equipment such as:

- Drives, both AC and DC
- Circuit breakers
- Motor control centers
- Soft starters
- Fuses
- Power distribution panels
- Surge suppressors
- Cables

Wide Range of Capability

Built to exceed the short circuit capacity of today's high power electrical distribution systems, the Gubany Center performs:

- Ultra-high power testing from 200kA to 300kA at 600Vac, three-phase
- Medium power testing from 5kA to 200kA at 600Vac, single- and three-phase; to 100kA at 1450Vac single-phase; to 100kA at 1000Vdc
- Low power testing up to 5kA at 600Vac, single-phase.

Our technicians conduct tests to many global agency standards including:

- ANCE
- ANSI
- CE
- CSA
- ETL
- IEC, and
- Underwriters Laboratories

To Order:

To find out more contact your local Cooper Bussmann representative, or visit us online at www.cooperbussmann.com/services.



Testing Catalog Numbers		
Description		Catalog Number
High Power Testing	Hourly Rate	CBSV-ES-TEHP
Medium Power Testing	Hourly Rate	CBSV-ES-TEMP
Low Power Testing	Hourly Rate	CBSV-ES-TELP

Custom Products

Creating the Right Answers to Unique or Demanding Needs

When you wish to gain a competitive edge or improve your product's performance, have Cooper Bussmann provide a custom product that can:

- Improve functionality and utility
- Fit unique design needs
- Reduce labor and component costs

Our Expertise Is Your Advantage

For over 90 years, Cooper Bussmann has designed and manufactured products that improve electrical safety and performance. Whether it's modifying an existing product or creating a new one, our experience effectively brings together the skills to design, prototype, test, manufacture and secure agency approvals to deliver a single component, sub-assembly or finished product.

Cooper Bussmann can design and manufacture products that integrate:

- Fuses - with the right size and performance characteristics
- Fuse holders and blocks - with the requisite terminations, mounting options and safety features
- Wire connection products - that make wiring simpler, safer and faster
- Molded products - that give the unique shape your product needs
- Power distribution products - that meet prevailing agency and Code requirements

In-House Testing

All electrical performance testing of your custom products can be performed at the Cooper Bussmann® Paul P. Gubany Center for High Power Technology, an ASTA and CSA accredited, and an ANCE Designated facility.

We're able to conduct electrical performance testing that replicates any power system to be encountered in any country, covering:

- Up to 300kA and 600Vac
- Up to 100kA and 1000Vdc

And our technicians conduct tests to many global agency standards including:

- ANCE
- ANSI
- CE
- CSA
- ETL
- IEC, and
- Underwriters Laboratories



To Find Out More:

If you need a custom solution to a product problem, submit a Request for Quotation to your local authorized Cooper Bussmann distributor or sales representative.